

It's about an idea I had when I was a child. I once thought that, if a person had a big change in concept, personality, and so on, then is it still the same person? Of course, I wasn't adequate enough to think about the topic of personal identity as a child, and I still may not be able to. All I know is that memories are almost invariable, that concept or characteristic and so on are formed from memories. So the answer I've come up with is yes. With memory as the core, each change is a brand new outer layer, one layer covered in another, like an onion, like a cabbage.....



YIJUN CHEN



I was a child. I once  
had a big change in concept,  
is it still the same person?  
I was enough to think about the  
change of a child, and I still may not  
know if memories are almost  
characteristic, and so on are  
the answer. I've come up  
with the core, each change is a  
layer covered in another.



**YIJUN CHEN**

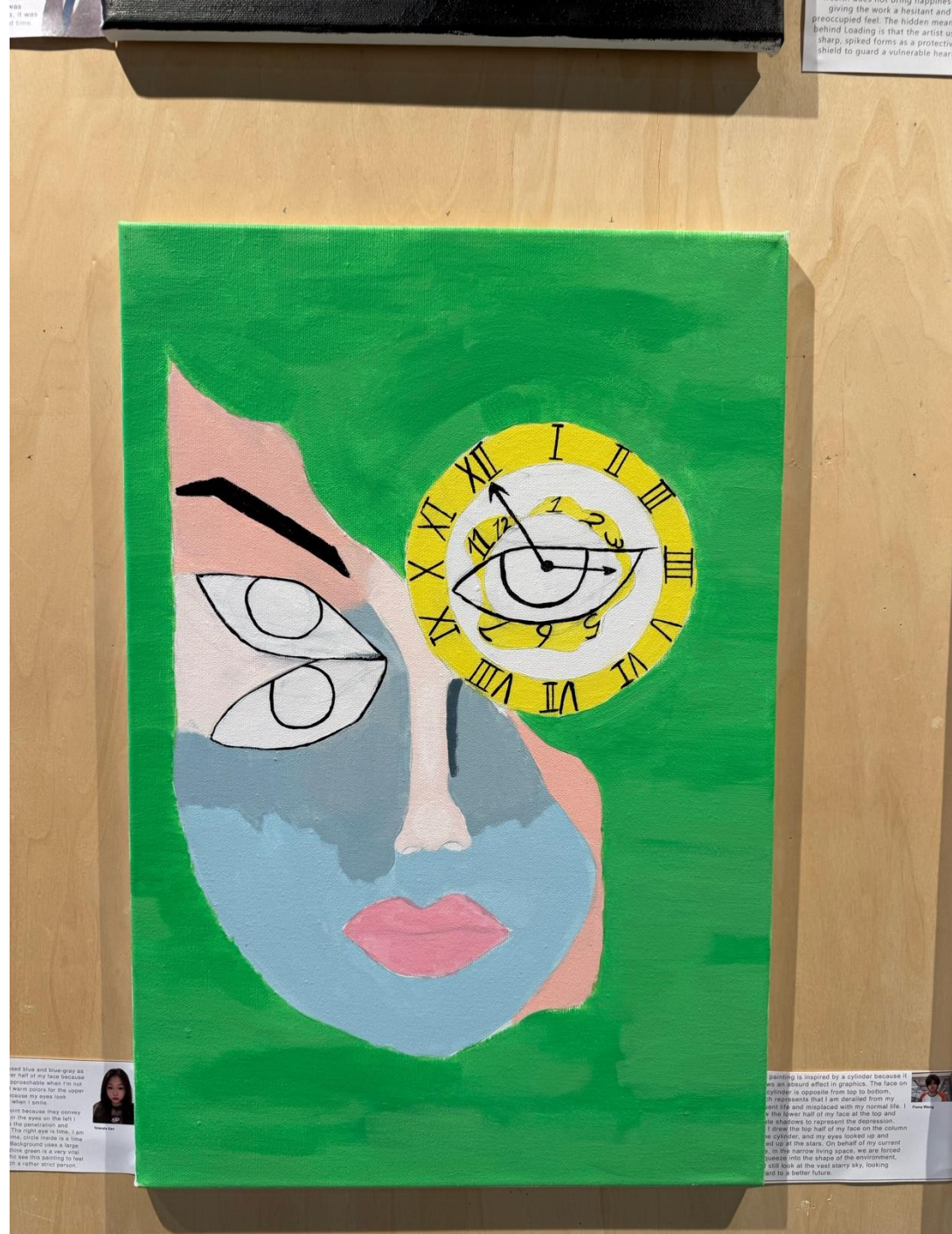
This is my self-portrait, I used blue and blue-gray as the main colors for the lower half of my face because I usually don't look very approachable when I'm not smiling. The reason I used warm colors for the upper half of my face is because my eyes look approachable when I smile.

I chose eyes as a focal point because they convey emotions directly, and for the eyes on the left I wanted to emphasize the penetration and determination of the gaze. The right eye is time, I am a person sensitive about time, circle inside is a time that has been distorted. Background uses a large area of green because I think green is a very vital color, and I want people who see this painting to feel vitality and energy in such a rather strict person.



**Yolanda Gan**





giving the work a hesitant and preoccupied feel. The hidden meaning behind Loading is that the artist uses sharp, spiked forms as a protective shield to guard a vulnerable heart

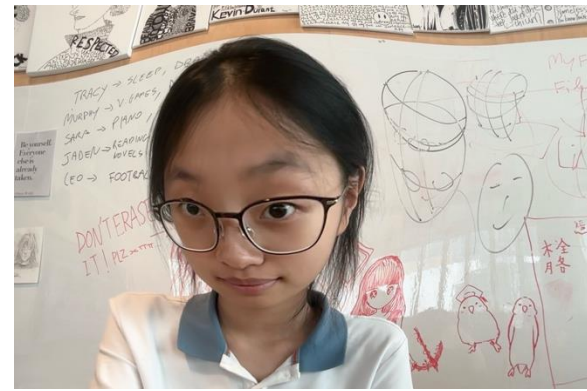
dark blue and blue-gray as we walk in my face because...  
 010 because they convey at the eyes on the left...  
 The right eye is blue, I am...  
 Background uses a large...  
 Blue-green is a very cold...  
 to see this painting to feel...  
 as a rather strict person

Painting is inspired by a cylinder because it...  
 an absurd effect in graphics. The face on...  
 cylinder is opposite from top to bottom...  
 It represents that I am derelict from my...  
 and life and misplaced with my normal life...  
 the lower half of my face at the top and...  
 like shadows to represent the depression...  
 I drew the top half of my face on the column...  
 cylinder, and my eyes looked up and...  
 ed up at the stars. On behalf of my current...  
 s, in the narrow living space, we are forced...  
 break into the shape of the environment...  
 still look at the vast starry sky, looking...  
 and to a better future.



Yolanda Gan

This creation I think helped me understand myself better. In this artwork, yellow serves as the dominant hue, enveloping the entire environment. I chose yellow because it embodies warmth and positivity—qualities, that I aspire to share with others. By incorporating yellow into my skin, hair, clothes, and even the desks in the scene, I aimed for a harmonious composition that resonates with my inner self. A pivotal element in my drawing is the hand supporting the ball on which I stand. This hand symbolizes my parents' unwavering support and protection. They have been instrumental in helping me navigate and communicate with the world around me. The ball represents my perspective—how I view life and engage with my surroundings. The Contrast of Background. The background is intentionally rendered in black, representing negativity and frustration. This choice underscores my determination to rise above challenges. Despite the darkness surrounding me, I aim to remain unaffected, continuing to project a sense of sunshine and positivity.



Phoenix He





Phoenix He

This work is mainly divided into two parts, the left half of the face and the half of the face. The color of the left half is relatively bright, and the eyes are larger, and the color of the hair is also different. What I want to express is that I have completed the transformation after a long period of exercise. On the right, I used a lot of dark colors to color, because in the process of my creation, I regarded half of the side as the previous me, and my hairstyle was more rigid. From the eyes and tears, it was revealed that I was very tired at that time.

# Happy Li





# Happy Li



This work is mainly divided into two parts, left half of the face and the half of the right. The color of the left half is relatively light, and the eyes are larger, and the texture of the hair is also different. What I want to express is that I have completed a transformation after a long period of time. On the right, I used a lot of dark colors to color, because in the process of creation, I regarded half of the side as previous me, and my hairstyle was rigid. From the eyes and tears, it was noted that I was very tired at that time.



This work is titled 'Loading'. The painting is predominantly blue, conveying a range of layered meanings. The blue tones suggest wealth does not bring happiness, giving the work a hesitant and preoccupied feel. The hidden message behind 'Loading' is that the artist's sharp, spiked forms are a protective shield to guard a vulnerable heart.





## SUKY

This painting depicts my dual personality. The long hair represents my positive side, while the short hair represents my darker side. I placed the long-haired personality in a dark background to show that I want to overcome my negative side with my most optimistic state, while my dark and negative side will gradually improve in a gentle background.





## SUKY

This painting depicts my dual personality. The long hair represents my positive side, while the short hair represents my darker side. I placed the long-haired personality in a dark background to show that I want to overcome my negative side with my most optimistic state, while my dark and negative side will gradually improve in a gentle background.





I used a similar abstract style like Picasso and composed the painting with many different patterns. Each of the different patterns in the painting has a different meaning, such as in the background of the figure, I wanted to express that the environment in which a person is may have various influences on them. In the painting within the figure, I expressed more of my personal life philosophy and the world as I see it, but most of it was expressed in abstract language in a subtle way. For example, in the upper gray area, I wanted to express that sometimes people may expose their weaknesses to others, thereby making others more concerned about themselves. It's like forcing someone to hold a gun to one's head.



Leo Liang



I used a similar abstract as the life Picasso and composed the painting with many different patterns. Each of the different patterns in the painting has a different meaning, such as in the background of the figure, I wanted to express that the environment in which a person is may have various influences on them. In the floating white philosophy and the world as I see it, the most of it was expressed in abstract language in a subtle way. For example, on the upper gray area, I wanted to express that sometimes people may expose their weaknesses to others, thereby making others more concerned about themselves. It's like forcing someone to hold a gun to one's head.



In my self-portrait, I chose a colorful wall to represent various experiences in life. The unhealthy green, irregular shape resembles a brain, symbolizing my own insecurities in life's challenges. The color of the wall conveys the complexity and elasticity of life, while the shape of the green reflects the unhappiness and fluctuations of my present. This contrast is meant to express the dissonance between the beauty on the outside and the chaos on the inside, to express the illusory feeling I have about my life now.



Leo Liang



Please write something on behalf of Alice



**Alice Ruan**



Mark  
is my  
brust  
over  
the di  
like fr  
image.



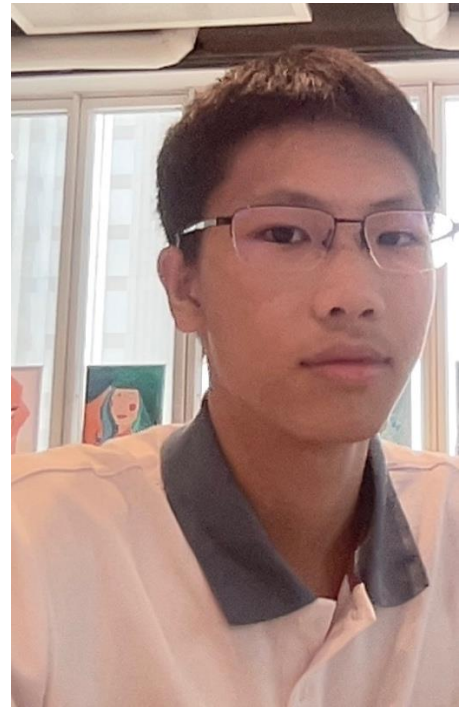
**Alice Ruan**



## Ethan Sun's Self Portrait

I have been thinking about a scene of my hand holding my head, thinking the result will be expressive to some extent. So, I took a picture of my arm, trying to paint the shadow and line of muscles. But when it comes to real trying, I found out that I cannot paint a subject as easy as I sketch, it might be caused by my lack of experience in painting.

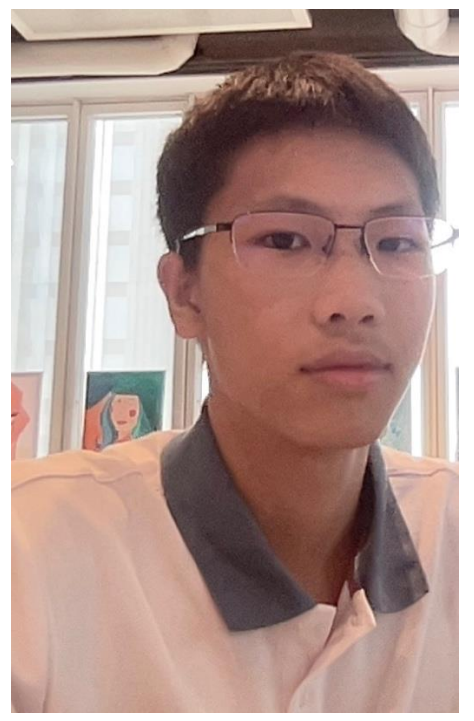
So, I used simple colors in big areas to show my idea.



...e of my  
...he result will  
...y, I took a  
...the shadow  
...comes to  
...not paint a  
...light be  
...be in painting.  
...areas to show



...to m  
...blue  
...atting  
...wing  
...offer a  
...2000  
...sunflor  
...Lookin  
...without  
...that lon  
...out of m  
..."weird"  
...one that  
...only you  
...flowers o  
...flowers, a  
...splore the

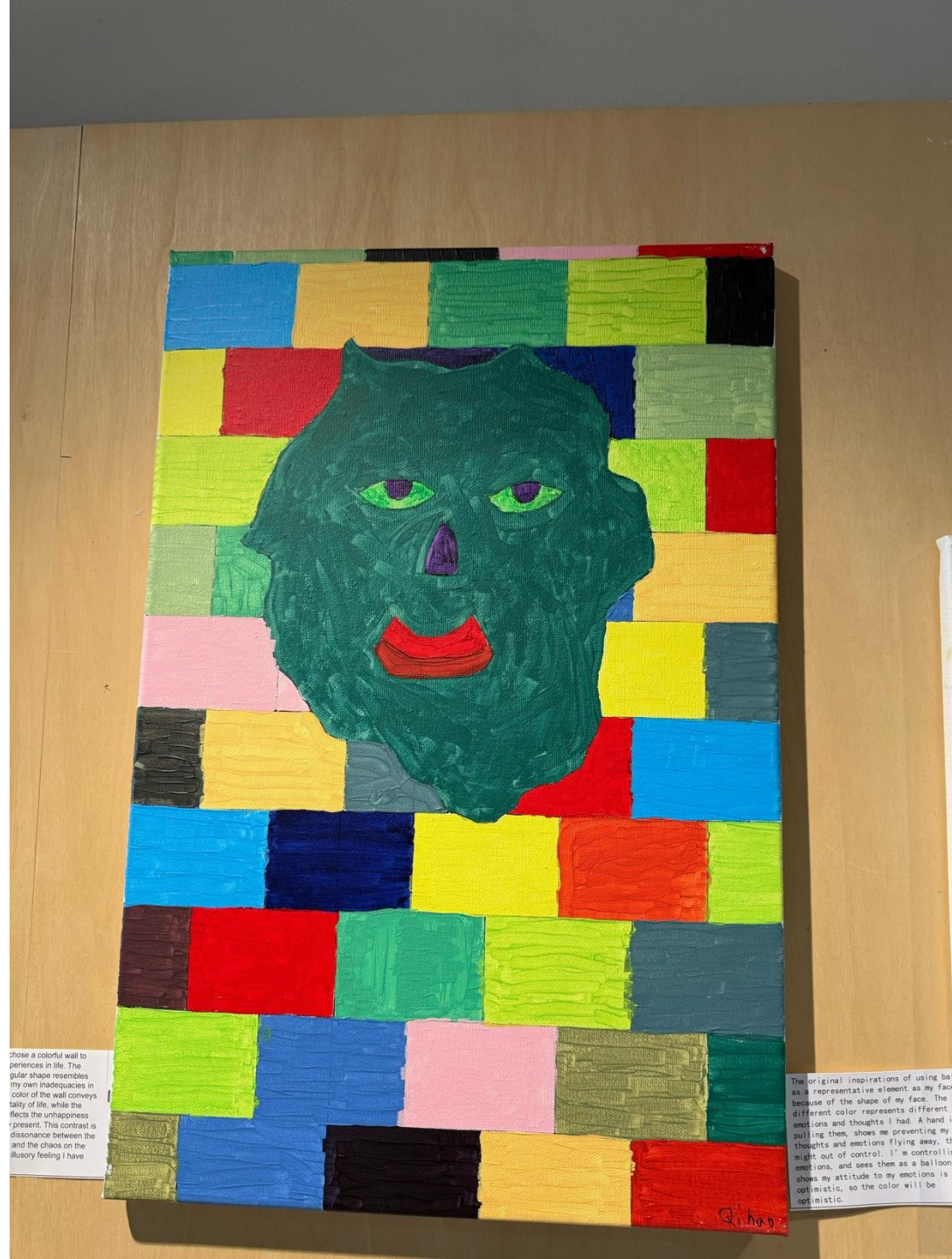




In my self-portrait, I chose a colorful wall to represent various experiences in life. The unhealthy green, irregular shape resembles phlegm, symbolizing my own inadequacies in life's challenges. The color of the wall conveys the complexity and vitality of life, while the shape of the green reflects the unhappiness and frustrations of my present. This contrast is meant to express the dissonance between the beauty on the outside and the chaos on the inside, to express the illusory feeling I have about my life now.



**Qi Hao Sun**



I chose a colorful wall to represent my experiences in life. The green shape resembles my own inadequacies in life, while the red lips reflect the unhappiness I feel. This contrast is a dissonance between the reality and the illusory feeling I have.

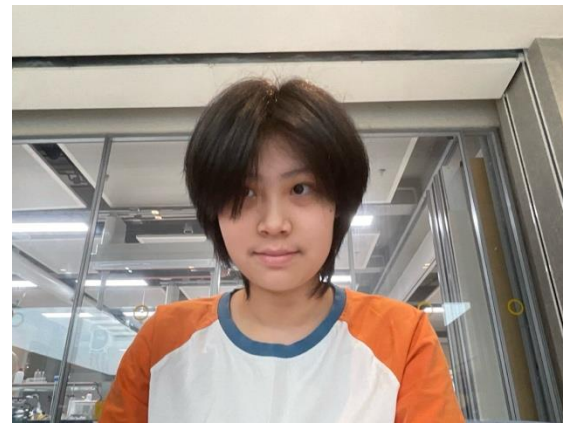
The original inspirations of using a ball as a representative element as my face because of the shape of my face. The different color represents different emotions and thoughts I had. A hand pulling them, shows me preventing my thoughts and emotions flying away, that might get out of control. I'm controlling my emotions, and sees them as a balloon, shows my attitude to my emotions is optimistic, so the color will be optimistic.



**Qi Hao Sun**



The painting is inspired by a cylinder because it shows an absurd effect in graphics. The face on the cylinder is opposite from top to bottom, which represents that I am derailed from my present life and misplaced with my normal life. I draw the lower half of my face at the top and create shadows to represent the depression. And I drew the top half of my face on the column of the cylinder, and my eyes looked up and looked up at the stars. On behalf of my current state, in the narrow living space, we are forced to squeeze into the shape of the environment, but I still look at the vast starry sky, looking forward to a better future.



**Fiona Wang**

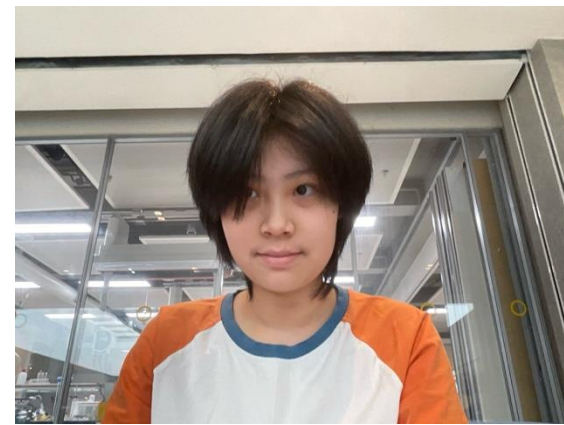


I'm inspired by a cylinder because it has a 3D effect in graphics. The face on its opposite from top to bottom. It seems that I am detached from my world and replaced with my normal life. I wear half of my face at the top and down to represent the distortion. The top half of my face on the column floor, and my eyes looked up and at the stars. On behalf of my current narrow living space, we are forced to look into the shape of the environment. Look at the vast starry sky looking to a better future.



Fiona Wang

Self-portrait is a personality reflection in two sides of my personality. The blue side is reserved and active emotion. I used color in contrast and white to paint the eye on side and eye in the reserved side. This color color together to give a whole balance or created a whole green background and also in green color and used the same color of it because I always be held by ongoing rate pressure and need paint my face as to be because of the shape and color, but also harmonious pronunciation with my life.



**Fiona Wang**



I expressed the theme of "self-exploration" or "finding yourself" in an exaggerated and humorous way.

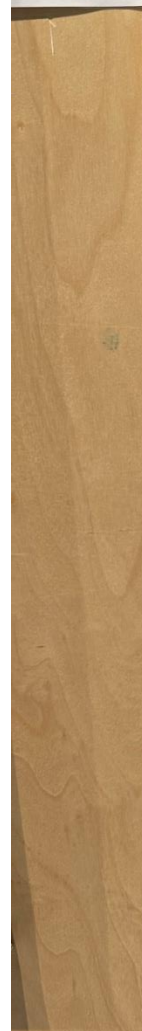
The eyes of the figures in the painting are enlarged by a magnifying glass, symbolizing a deep exploration of self-knowledge.

The surrounding question marks further emphasize the uncertainty and curiosity in this quest. I used a sharp color contrast, such as a red top and a blue background, as well as green hair, which made the picture more vivid and striking. The expressions and gestures of the characters also convey a mood of thinking and wondering, adding to the depth of the work.



**Tracy Wu**

...oration" or  
...and humorous  
...ing are enlarged  
...ing a deep  
...ledge.  
...other emphasis  
...is quest. I used a  
...ed top and a blue  
... which made the  
...e expressions and  
...convey a mood of  
...to the depth of the



Tracy Wu

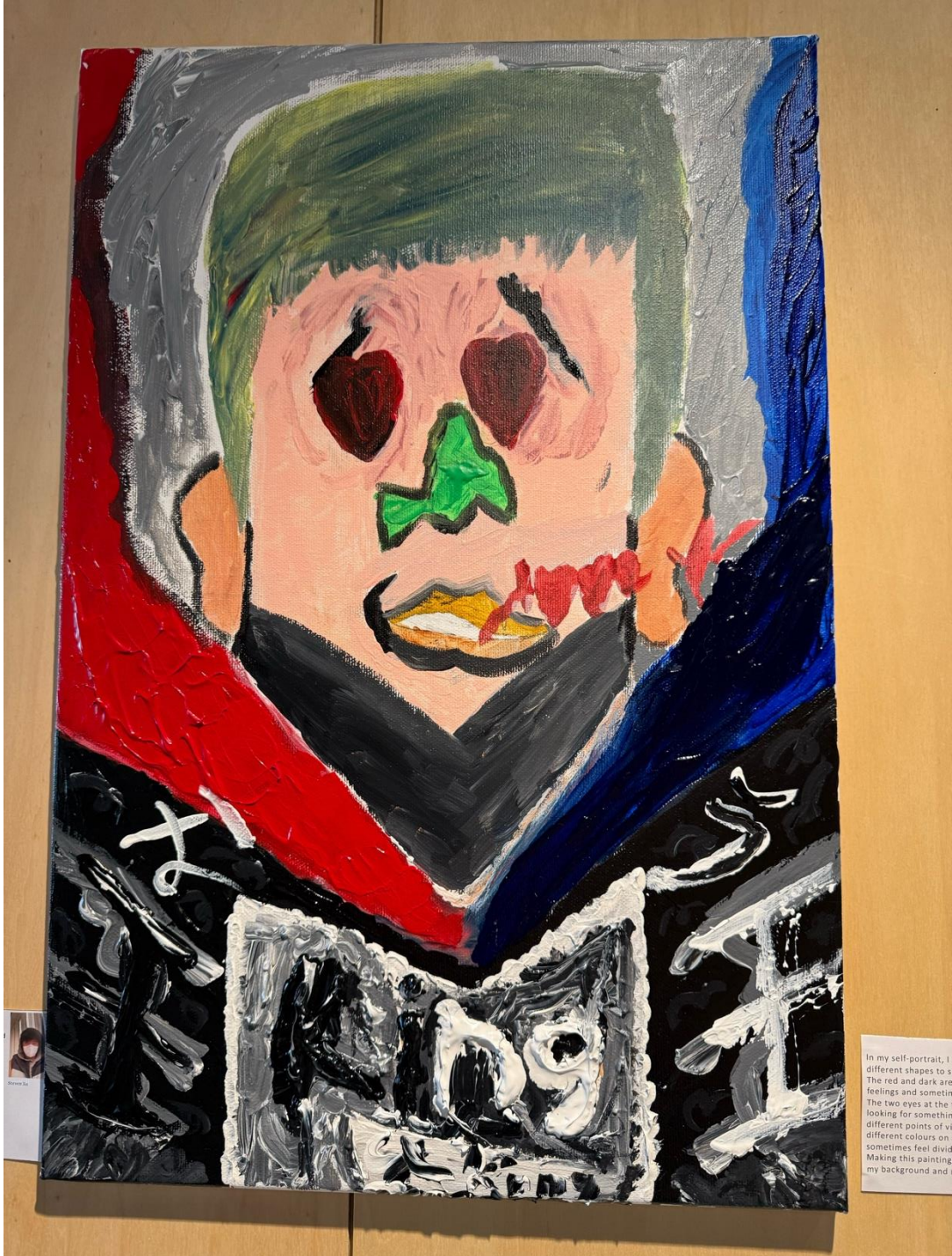


Overall, this portrait turned out to be quite amusing. I didn't anticipate that it would end up like this, considering I created it entirely by myself. I approached it step by step, making decisions as I went along. The final look reflects my intention to make it unique and humorous. For the details, I made the nose and eyes more unconventional, while for the mouth, I gave it a funny expression as if someone is smiling because they find you charming. These main features guided the creation of other details, like the hair and ears.

By the way, I really like the overall style, especially the black clothing and the two scarves—one blue and the other red. Both scarves were added spontaneously, which I think adds to the playful feel of the portrait.



Steven Xu



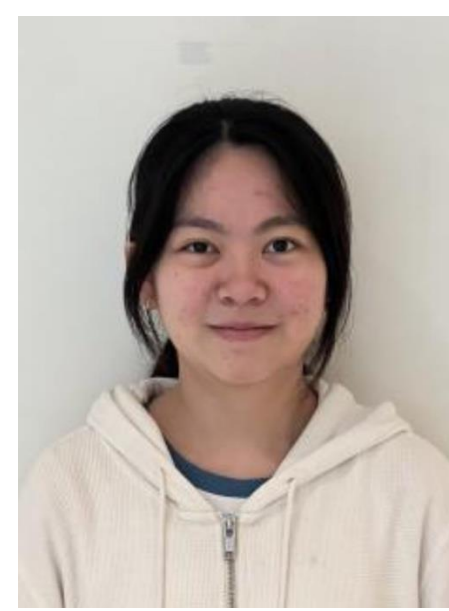
In my self-portrait, I  
different shapes to s  
The red and dark are  
feelings and sometin  
The two eyes at the  
looking for somethin  
different points of vi  
different colours on  
sometimes feel divid  
Making this painting  
my background and



Steven Xu



In the process of creating this self-portrait, I integrated butterflies into the picture as a core element, symbolizing personal transformation and growth. I placed butterflies on my eyes to express my exploration of new perspectives and self-cognition. I chose green as the background to symbolize vitality and hope and to contrast with the blue clothes. In addition, I choose a realistic style without exaggeration or abstract techniques, because I want to present the inner world of an ordinary girl when she experiences conflicts between growing up and puberty, and I hope to express the changes and thoughts in the process of growing up.



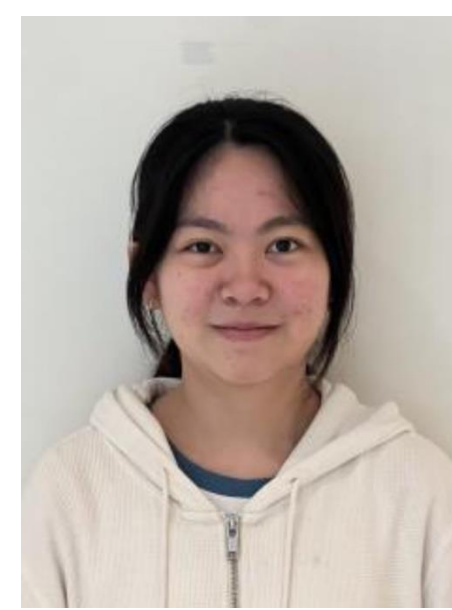
Coco Zeng 《self-portrait》



self-portrait. I integrated  
element, symbolizing  
... I placed butterflies  
of new perspectives  
in the background to  
contrast with the blue  
realistic style without  
... because I want to  
depict a girl when she  
is coming up and puberty  
... and thoughts in the



It's about an idea I had when I was a child. I once  
thought that, if a person had a big change in their  
personality, and so on, then it is still the same person.  
Of course, I wasn't adequate enough to think about  
topic of personal identity as a child, and I still can't  
be able to. All I know is that memories are almost  
invariable, that concept or characteristic and so on  
formed from memories. So the answer I've come  
with is yes. With memory as the core, each change  
brings new outer layer, one layer covered in another  
like an onion, like a cabbage.....



Coco Zeng 《self-portrait》



# The Evil

---

The original intention of this painting is to express that everyone has the right to love beauty, even the devil. There are many contrasts in this painting. For example, even the devil can have full lips, high eyes and long eyelashes, and the pink background indicates that the devil is actually a girl inside.



Jenny Zhang



f this painting  
one has the  
ren the devil.  
asts in this  
, even the devil  
h eyes and long  
ink background  
il is actually a



This creation I think helped me understand myself better. In this artwork, yellow serves as the contrast, but, involving the entire background. I chose yellow because it represents warmth and positivity, which I hope to share with others. As I was painting the devil's horns, I used a dark blue color to make the devil's horns stand out. I aimed for a harmonious composition that resonates with my inner self. Several elements in the drawing are the devil's horns, suggesting the evil or which I desire. The horns symbolize my inner strength and my ability to navigate and communicate with the world around me. The devil represents my perspective—how I see the world and engage with my surroundings. The Contrast of Background. The background is intentionally rendered in black, representing mystery and darkness. This choice underscores my determination to see things through. Despite the darkness surrounding me, I aim to remain unaffected, continuing to project a sense of sunshine and positivity.



Jenny Zhang



I use bold color blocks and contrasting tones to express inner conflict and duality. The left side features cool tones like blue and gray, representing calmness, solitude, and suppression, while the right side combines deep blue, dark red, and black, symbolizing the complexity and unease of emotions. My aim is to convey that everyone has negative emotions, which are often not openly expressed but rather buried deep within. This painting reflects those hidden feelings, the side of ourselves we usually keep concealed, showing the internal struggles that remain beneath the surface, unseen by others but deeply felt within.

**Darwin Zheng**





I use bold color blocks and contrasting tones to express inner conflict and duality. The left side features cool tones like blue and gray, representing calmness, solitude, and suppression, while the right side combines deep blue, dark red, and black, symbolizing the complexity and unease of emotions. My aim is to convey that everyone has negative emotions, buried deep within. This painting reflects those hidden feelings, the side of ourselves we usually keep concealed, showing the internal struggles that remain beneath the surface, unseen by others but deeply felt within.



I used a similar abstract style to the Picasso and the painting with many different patterns. Each different pattern in the painting has a different such as in the background of the figure, I want to have various influences on them. In the painting the figure, I expressed more of my personal life, philosophy and the world as I see it, but most is expressed in abstract language in a whole way. For example, in the upper gray area, I wanted to say sometimes people may express their weaknesses thereby making others more concerned about it. It's like forcing someone to hold a gun to one's

**Darwin Zheng**



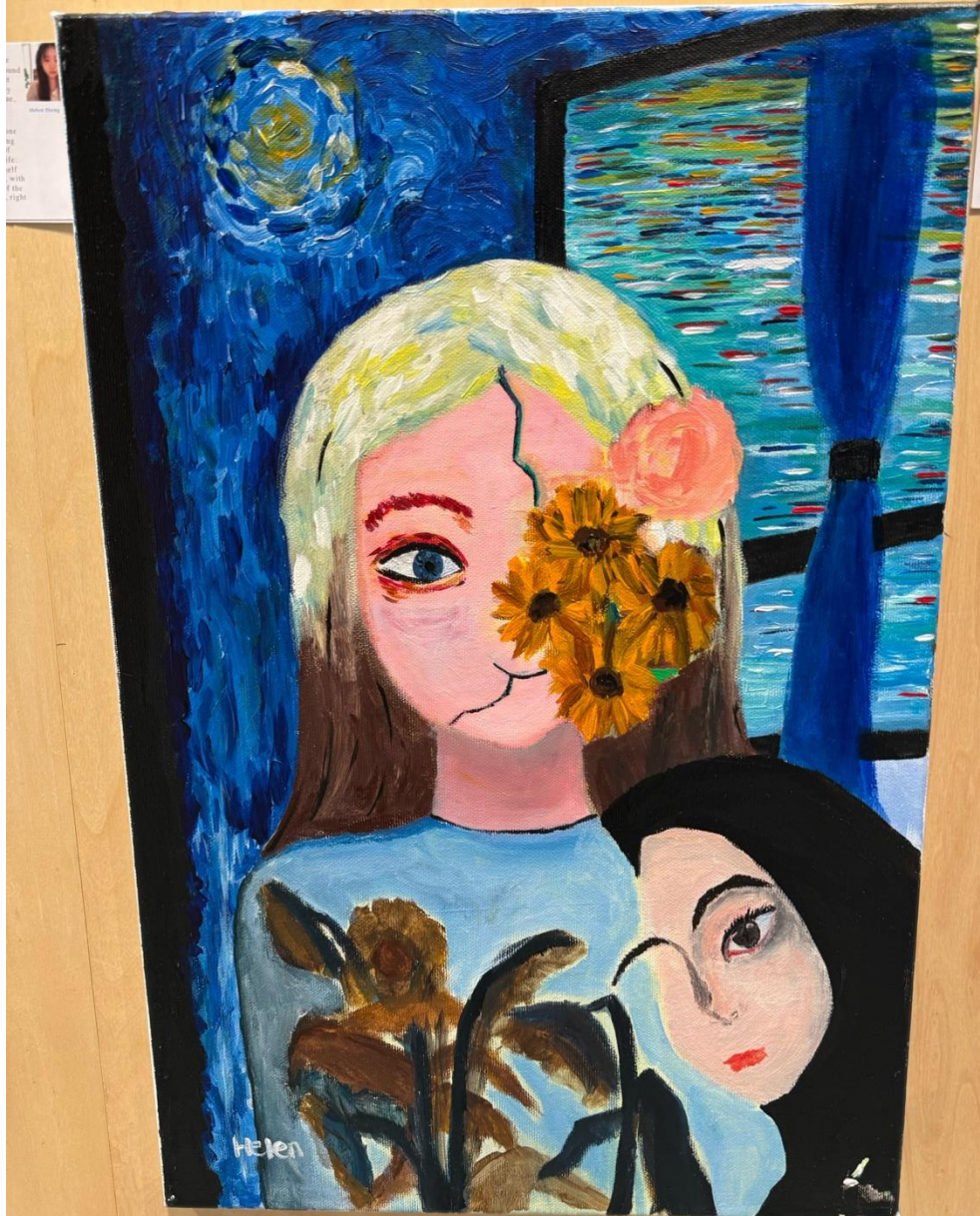


In my self portrait, I experiment with the prime colors, mostly blue, and the style of Impressionism. Since I am really into the artworks of van Gogh, I tried to paint my hair and the background using the small, straight brushstrokes and unblended color that offer the “first impression” of the artwork. I also presented my favorite things on this portrait: my favorite color pink and blue, sunflower, and rose.



Helen Zheng

Looking closer, I drew sunflowers on my bigger face and the withered sunflower on my shirt. I also depicted two faces – one that looks like a mask, and the other real, normal face growing out of my shoulder. It shows a contrast, and a combination of “weird” and “normal”. We often have two identities in our life: one that the others see (your social side) and the authentic self (only you can see). My social side is the face in the middle, with flowers covering half of my face, and stems stretching out of the flowers, meaning that I hide something. I hide my real self, right below the flowers, but in reality, I don’t often show it up.



Appearance anxiety  
discussed topic in ad  
bothered the lives of  
like me. In this portra  
version of me, withou  
and the other clean as  
show to the public. Bu  
are hugging and holdi  
that we should embrac  
And in the picture I am  
self-relief and comfort.  
the outside, we should  
appreciate ourselves, b



Helen Zheng